

The coordination and control responsibility in large scale incidents

- the managerial roles within the police

*Jakob Kristensen
Police Superintendent
Danish National Police*

Coordination and control responsibility

Regulated

On a day to day basis as well as in crisis

Based on mutual agreed key principles



Greenland



2.175.600 km², (DK x 53)

16 cities, 55 settlements,
1 USAF base

56.000 citizens

1 police district

Reports to the Danish Ministry of Justice, the
Danish National Police and the Danish
Director of Public Prosecutors

244 full time employees

141 police officers

21 police students

10 prosecutors

53 administrative personnel

19 sailors

85 part time employees

44 reserve officers

41 civil servants with police authority

Coordination and control responsibility

Regulated by

Preparedness Act of Greenland (Police Coordination)

SAR Greenland (Cooperation)

Preparedness Act of Greenland

§ 13. The combined response is coordinated by the police

§ 14. Early warning, cordoning, evacuation and other necessary measures is decided by the police

SAR Greenland

SAR responsibility is divided between **Joint Arctic Command (JACMD)** and the **Police**.

JACMD is responsible for search and rescue operations at sea.

The **Police** is responsible for search and rescue operations in coastal sea areas and on land.

The other party will send a liaison officer to the appointed SAR Mission Coordinator (SMC)

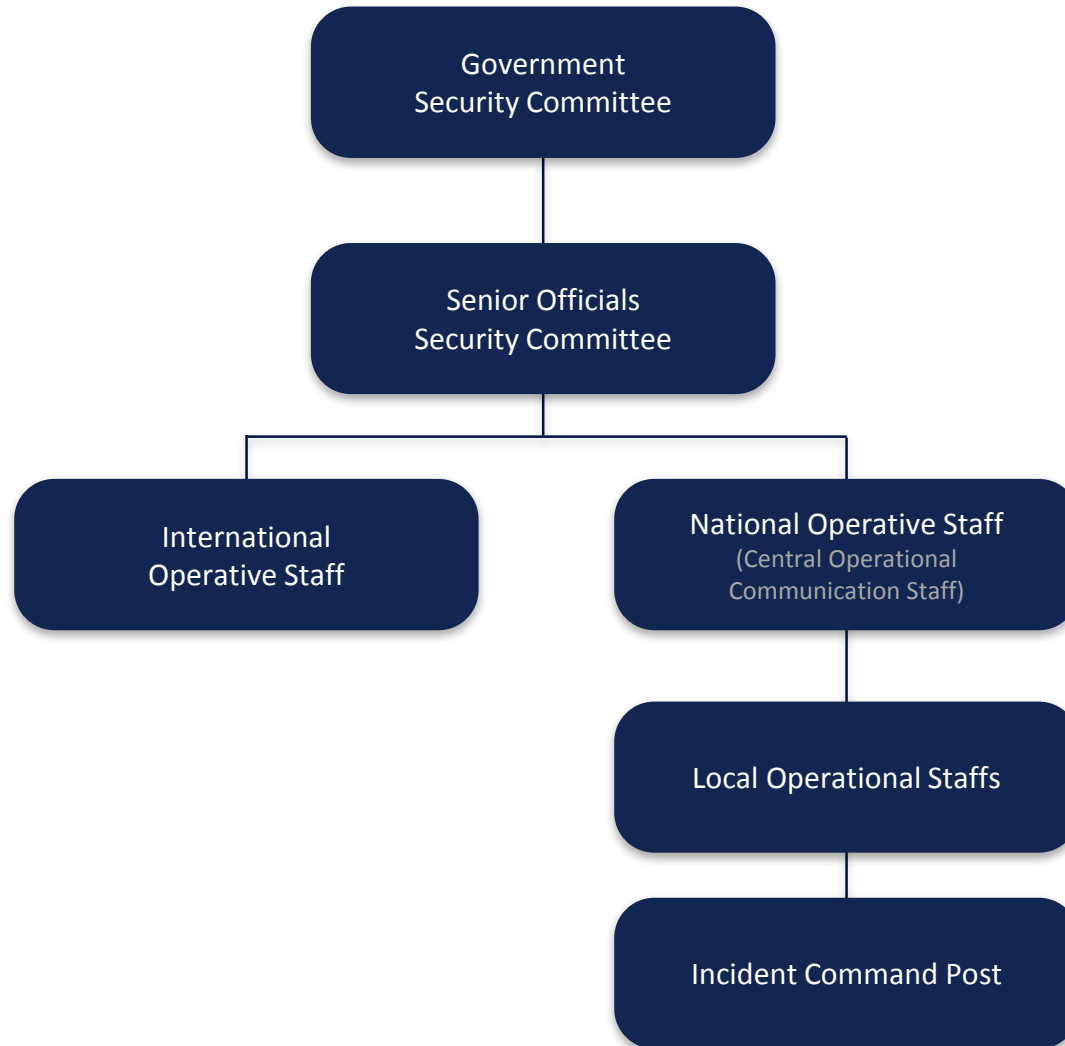
Crisis management



GBS members



Danish crisis management



NOST permanent members

The Danish Security
Intelligence Service

The Danish Transport and
Construction Agency

The Danish Defence
Intelligence Service

Defence Command Denmark

NOST
Chaired by Police

The National Board of Health

The Danish Emergency
Management Agency

The Danish National Police

The Ministry of Foreign Affairs

Crisis management principles

Sector responsibility

Similarity

Proximity

Cooperation

Precaution

Sector responsibility

The department or agency which has the daily responsibility retains responsibility during crisis.

Similarity

Day to day procedures and organisation should to the largest extent possible be maintained when activating the crisis management organisation.

Proximity

Emergency- and crisis management should be handled at the lowest organisational level possible and as close to the citizen as possible.

Cooperation

Authorities are responsible for cooperating and coordinating with each other in terms of both preparedness planning and crisis management.

Precaution

In a situation with unclear or incomplete information, it is always preferable to establish a higher, rather than a lower, level of preparedness.

If possible adjustments to lower the preparedness level must be made quickly, in order to minimize strain on resources.

Coordination and control responsibility

Regulated

On a day to day basis as well as in crisis

Based on mutual agreed key principles