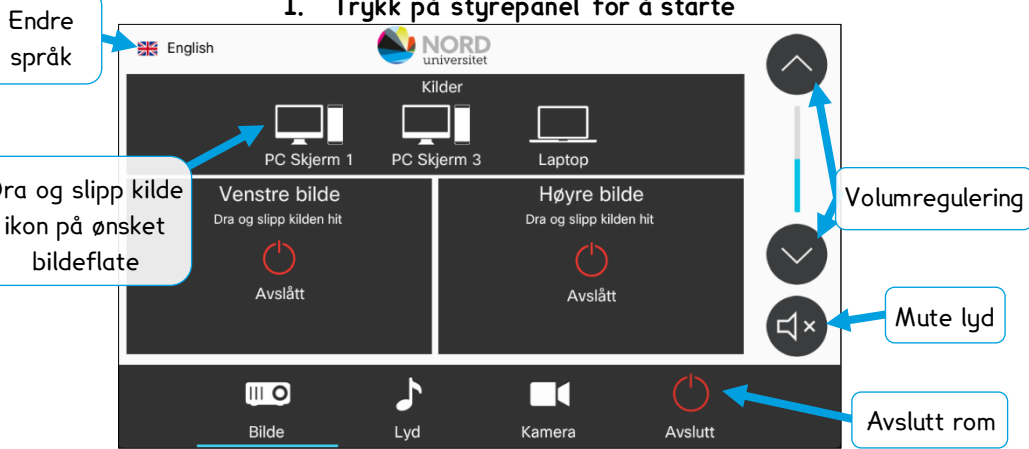


Hvordan benytte digitalt utstyr i rommet

VIKTIG! Bruk mus eller tastatur for å aktivere skjermer.

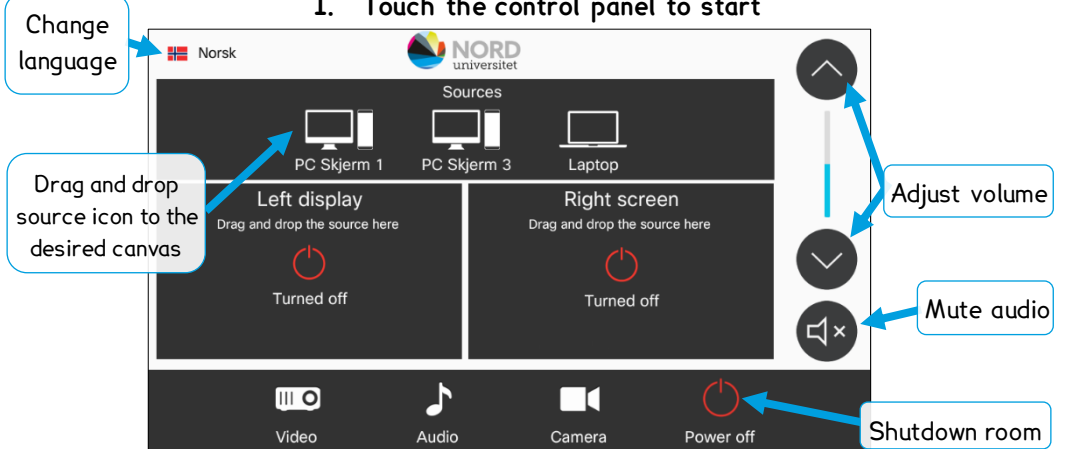
1. Trykk på styrepanel for å starte



How to use digital equipment in this room

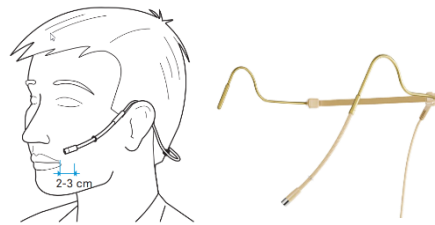
IMPORTANT! Use the mouse or keyboard to activate the screens.

1. Touch the control panel to start



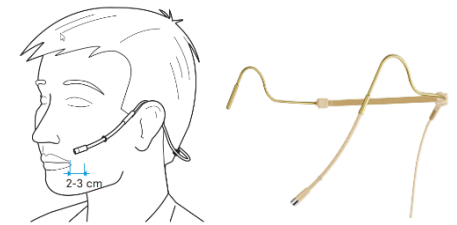
NB! Husk å sette mikrofon tilbake på lading etter bruk.

Mute av/på.
(Grønt lys gir lyd)



NB! Remember to put the microphone back in the charging cradle.

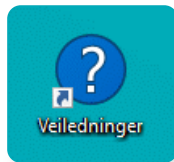
Mute on/off.
(Green light = audio)



Ved feil på teknisk utstyr, ring **75 51 74 00**

Se mappen «Veiledninger» på skrivebordet for mer info.

**NB! NÅR DU FORLATER ROMMET - LUKK NETTLESER!
PC SKAL IKKE SLÅES AV!**

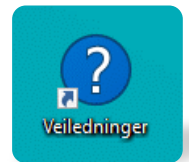


Flip for English version

In case of faulty equipment, call **75 51 74 00**

See folder "Veiledninger" on the desktop for more info.

**NB! WHEN YOU LEAVE THE ROOM - CLOSE THE BROWSER!
PC MUST NOT BE SWITCHED OFF!**



Snu for norsk