

Hvordan benytte digitalt utstyr i rommet

VIKTIG! Bruk mus eller tastatur for å aktivere skjermer.

Projektor på/av



Presentere fra Laptop!

Koble til ledningen merket med «Laptop». Vent i 5 sekunder.



Mangler du USB-C på din enhet? Overgang fra HDMI kan lånes hos IT brukerstøtte.

Projector on/off



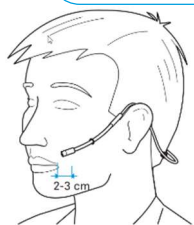
Present from Laptop!

Connect the cable labeled «Laptop». Wait for 5 seconds.

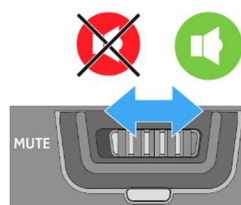


Missing USB-C on your device? Adapter from HDMI can be borrowed at IT support.

Mikrofonen slår seg automatisk på når den løftes fra ladestasjonen. Vent i 5-10 sekunder.

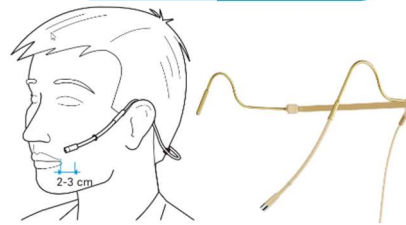


Mute av/på.
(Skarp grønt lys gir lyd)

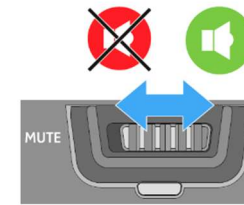


NB! Husk å sette mikrofon tilbake på lading etter bruk.

The microphone turns on automatically when lifted from the charging station. Wait for 5-10 seconds.



Mute on/off.
(Bright green light = audio)



NB! Remember to put the microphone back in the charging cradle.

Ved feil på teknisk utstyr, ring **75 51 74 00**

Se mappen «Veiledninger» på skrivebordet for mer info.

**NB! NÅR DU FORLATER ROMMET - LUKK NETTLESER!
PC SKAL IKKE SLÅS AV!**



How to use digital equipment in this room

IMPORTANT! Use the mouse or keyboard to activate the screens.

Projector on/off



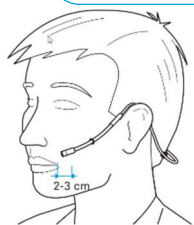
Present from Laptop!

Connect the cable labeled «Laptop». Wait for 5 seconds.

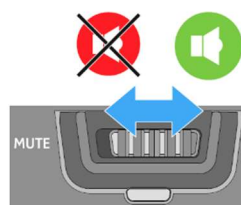


Missing USB-C on your device? Adapter from HDMI can be borrowed at IT support.

Mikrofonen slår seg automatisk på når den løftes fra ladestasjonen. Vent i 5-10 sekunder.

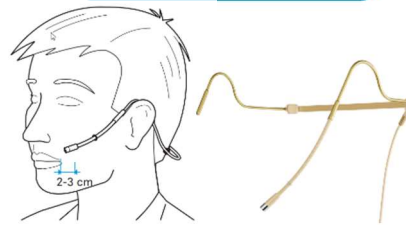


Mute av/på.
(Skarp grønt lys gir lyd)

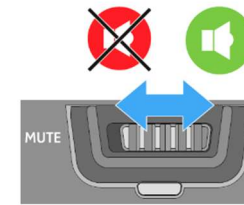


NB! Husk å sette mikrofon tilbake på lading etter bruk.

The microphone turns on automatically when lifted from the charging station. Wait for 5-10 seconds.



Mute on/off.
(Bright green light = audio)



NB! Remember to put the microphone back in the charging cradle.

In case of faulty equipment, call **75 51 74 00**

See folder «Veiledninger» on the desktop for more info.

**NB! WHEN YOU LEAVE THE ROOM – CLOSE THE BROWSER!
PC MUST NOT BE SWITCHED OFF!**

