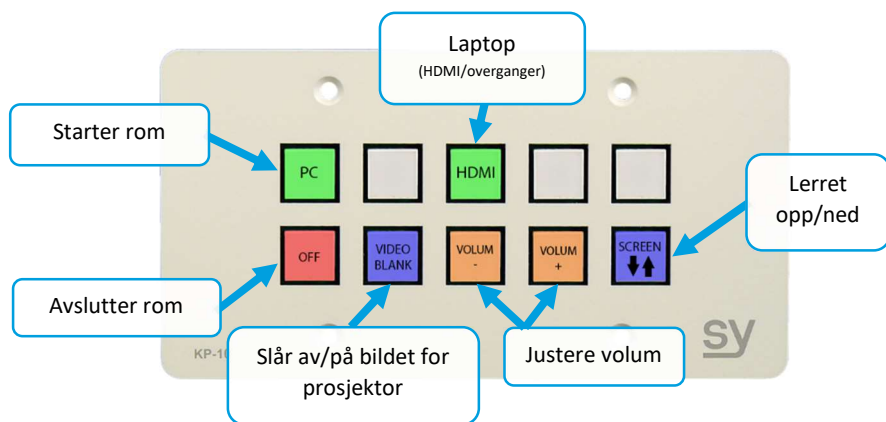
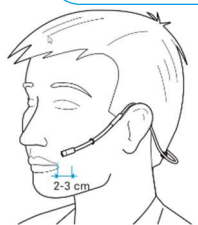


Hvordan benytte digitalt utstyr i rommet

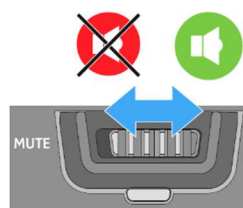
VIKTIG! Bruk mus eller tastatur for å aktivere skjermer.



Mikrofonen slår seg automatisk på når den løftes fra ladestasjonen. Vent i 5-10 sekunder.



Mute av/på.
(Skarp grønt lys gir lyd)

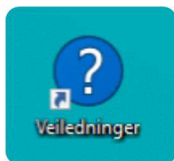


NB! Husk å sette mikrofon tilbake på lading etter bruk.

Ved feil på teknisk utstyr, ring **75 51 74 00**

Se mappa «Veiledninger» på skrivebordet for mer info.

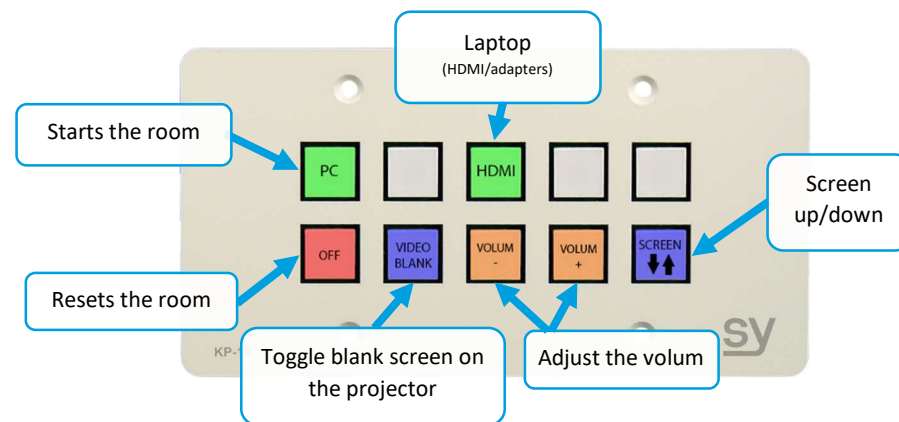
**NB! NÅR DU FORLATER ROMMET - LUKK NETTLESER!
PC SKAL IKKE SLÅS AV!**



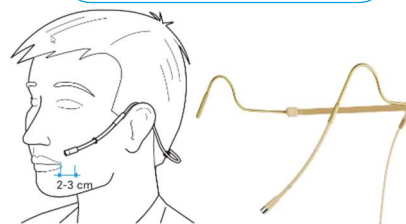
Flip for English version

How to use digital equipment in this room

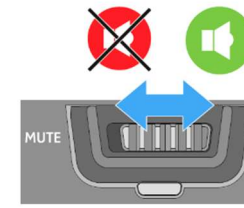
IMPORTANT! Use the mouse or keyboard to activate the screens.



The microphone turns on automatically when lifted from the charging station. Wait for 5-10 seconds.



Mute on/off.
(Bright green light = audio)

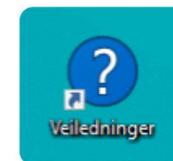


NB! Remember to put the microphone back in the charging cradle.

In case of faulty equipment, call **75 51 74 00**

See folder «Veiledninger» on the desktop for more info.

**NB! WHEN YOU LEAVE THE ROOM – CLOSE THE BROWSER!
PC MUST NOT BE SWITCHED OFF!**



Snu for norsk